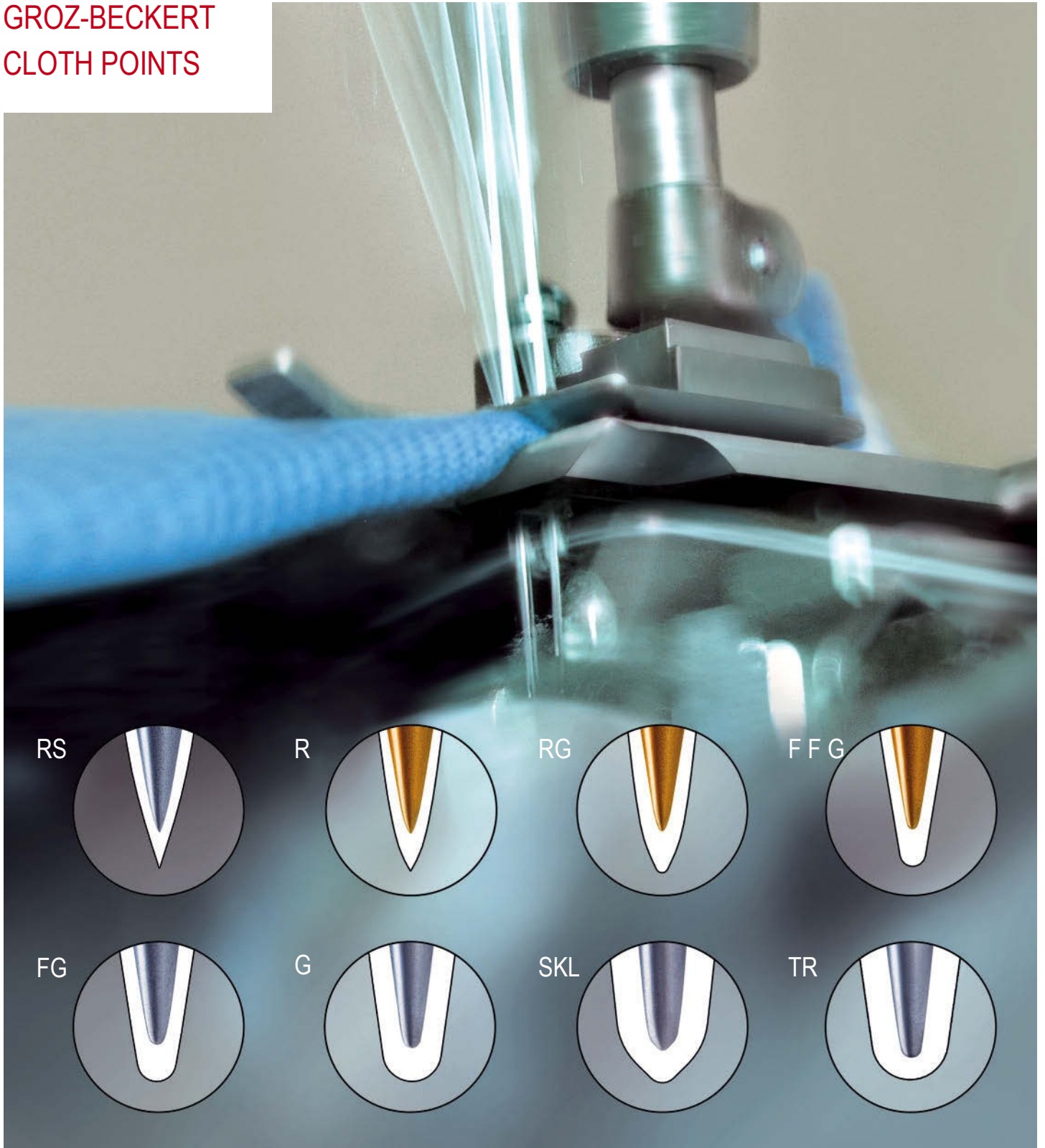


GROZ-BECKERT
CLOTH POINTS


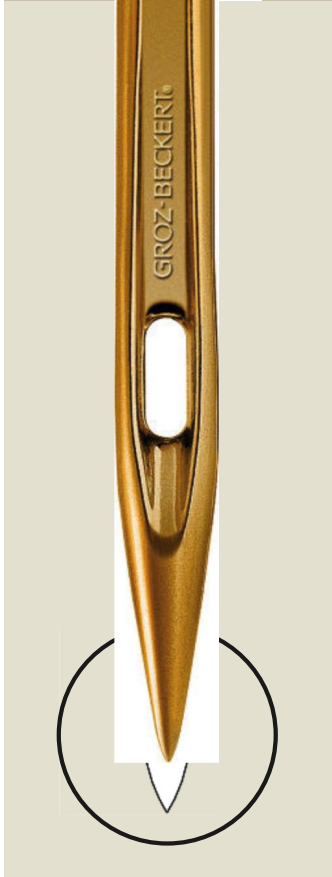
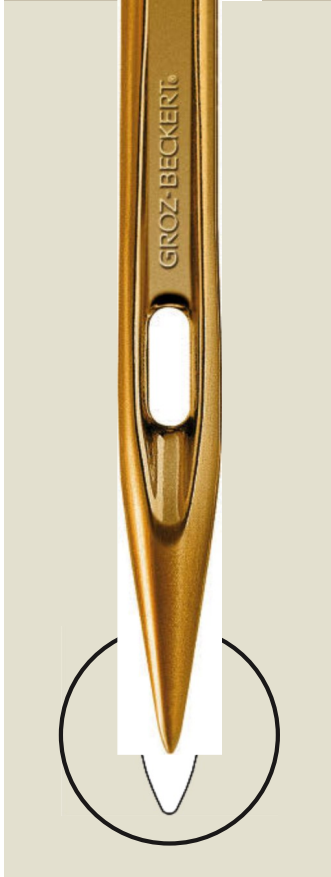


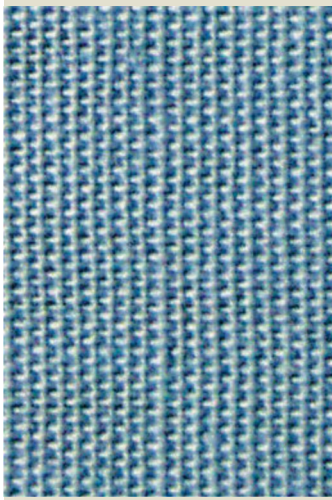

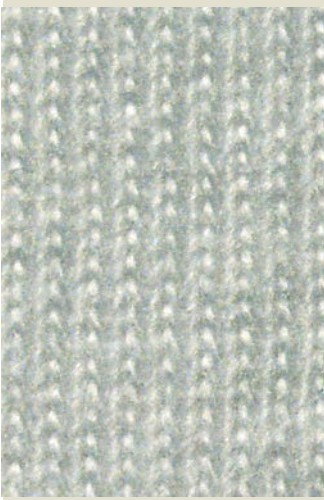


All textiles, whether woven, warped, felted or knitted, are sewn with a specific needle point shape to suit their structure.

The right choice of point has a significant effect on the finished sewing results. The right needle tip will give you the tip-top results you want.

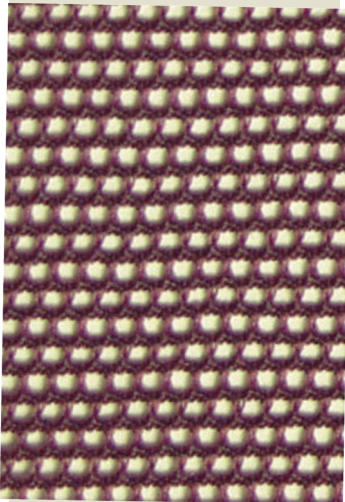
GROZ-BECKERT CLOTH POINTS

SPECIFICATIONS AND APPLICATIONS

RS	R	RG	FFG/SES
			
			
<p>Sharp round point Standard for blindstitch needles. For precise stitch sequences in lockstitch operations. A sensitive point, susceptible to damage. Example: Blouses, fine skirts and trousers, curtains</p>	<p>Regular round point Most common for all kinds of lockstitch applications (FST 301), particularly for woven fabrics, artificial leather, coated fabrics. Example: Shirts, trousers, various kinds of garments</p>	<p>Round point with slightly rounded tip Standard for all chainstitch operations (FST 401 and 406). Example: For fine, sensitive knitted fabrics, micro fibre, multi head embroidery</p>	<p>Light ball point For knitted fabrics and for wovens. Example: T-shirts, underwear, fine sweaters</p>

ALSO AVAILABLE IN GEBEDUR

®

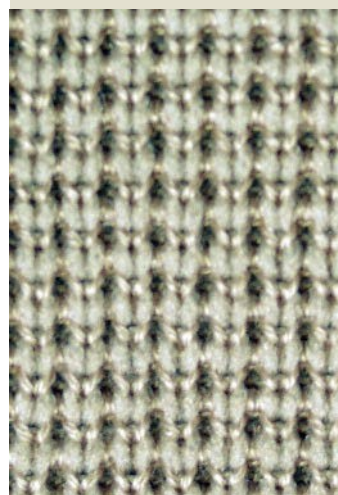


Medium ball point

For elastic fabrics with rubber or elastomeric contents.

Example:

Sweaters, lace, under wear, Schiffli embroidery

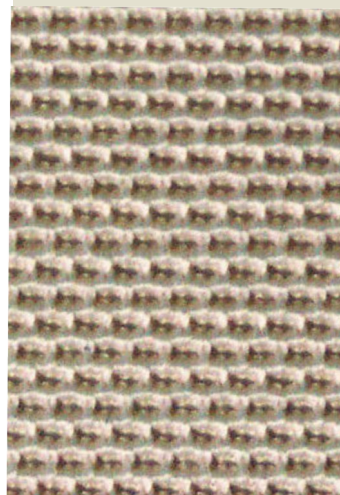


Heavy ball point

For very coarse and open structured elastic fabrics.

Example:

Sweaters, cardigans

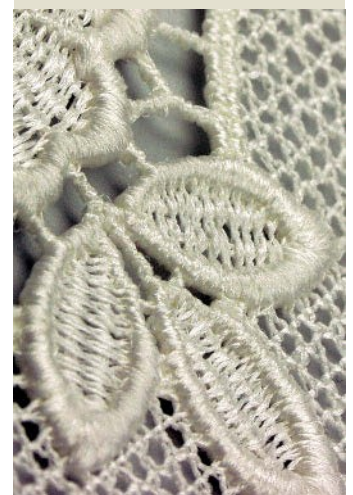


Special ball point

For warp fabrics with high elastomeric contents.

Example:

Underwear, orthopaedic clothes



Special ball point

For Schiffli embroidery applications.

Example:

Curtains, tablecloth

POINT CLASSIFICATIONS IN THE MARKET

Designation	Groz-Beckert- Equivalent	Designation	Groz-BeckerEquivalent
B BALL	FG	RS	RS
BPL	FFG	S BALL	RG
EH	RG	S SET	RS
FFG	FFG	SES	FFG
FG	FG	SET	R
G	G	SET RT	RG
H BALL	G	SI	FG
H SET	RG	SIN	FFG
J BALL	FFG	SKF	G
L BALL	FFG	SKL	SKL
M BALL	FG	SPI	RS
NEW RD	RG	STU	RG
NYR	FFG	STUB	RG
R	R	SUK	FG
R-SPI	RS	TB	FFG
R-STU	RG	TR	TR
RD	R	U BALL	G
RG	RG	Y BALL	G

Different needle manufacturers use different specifications for the same needle points

This guide will help you find the right Groz-Beckert specification.

GROZ-BECKERT KG

Konsew.LTD
 80 Hambrough road
 Southall
 UB1 1JB
 United Kingdom
 TEL:07476066290
 Email:sale@konsew.com
 Website:www.konsew.com

The depictions provided of our products are not to scale and are intended for illustrative purposes only. Consequently they make no claim to be an accurate representation of the original.

® = Registered trademark of the Groz-Beckert company group.
 © = This publication is copyrighted. All rights reserved, in particular the right of duplication, distribution and translation. This publication or any parts thereof may not be reproduced or stored, processed, duplicated or distributed using electronic systems in any form or by any means whatsoever without the express written consent of Groz-Beckert.